

April Week #4

## BIGGER THAN LIFE INSECTS

### GRADE 7

#### OBJECTIVES STUDENTS WILL

- achieve theme objectives;
- create a painting composition of an insect larger than life.

#### PROVERBS 6:6-8 and PROVERBS 30:25

#### VOCABULARY

- |               |             |
|---------------|-------------|
| • industrious | • labor     |
| • overlapping | • ingenious |
| • exaggerate  | • thorax    |
| • magnify     | • abdomen   |
| • background  | • antenna   |
| • setting     | • antennae  |
| • environment | • habitat   |
| • camouflage  |             |



#### MOTIVATION & FOCUS

- Present and discuss the art history image(s) recommended in the Weekly Theme. Discuss the variety of colors, sizes, and shapes of insects. Discuss the symbolism of the butterfly.
- Present Weekly Theme information.
- Play the sound recording.
- Tell students that they will be creating a composition of an insect larger than life in its environment.

#### ACTIVITY

- Choose an insect from a photo.
- Using pencil, draw the insect in its environment. Make the image fill the picture plane. If necessary use the grid method of enlargement. See December 18 for a same size reproduction. To enlarge, draw a one inch grid onto tracing paper the same proportion as the large paper. Draw a larger grid on the posterboard with the same number of squares. Lay the tracing paper over the photograph. Transfer the image twice the size by drawing the same information in each corresponding square,

#### MATERIALS

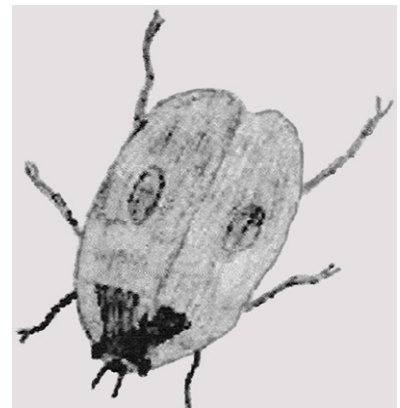
- |  |           |
|--|-----------|
| • optional tracing paper                   | • ruler   |
| • pencils                                  | • erasers |
| • white posterboard                        | • tempera |
| • painting set-up (see Introduction 19-23) |           |
| • images listed in this week's theme       |           |

only larger.

- Cover tables with newspapers. Set up all painting supplies. Paint

the entire paper to the edges. If white areas are desired, use white paint; otherwise the painting looks unfinished.

This beetle was excellently painted, but did not include the environment.



**Remember to use one of the evaluation tools.**