

April Week #4

## "INK BLOT" BUTTERFLY

GRADE 4

### OBJECTIVES STUDENTS WILL

- achieve theme objectives;
- create a butterfly using an "ink blot" technique.

### PROVERBS 6:6-8 and PROVERBS 30:25

### VOCABULARY

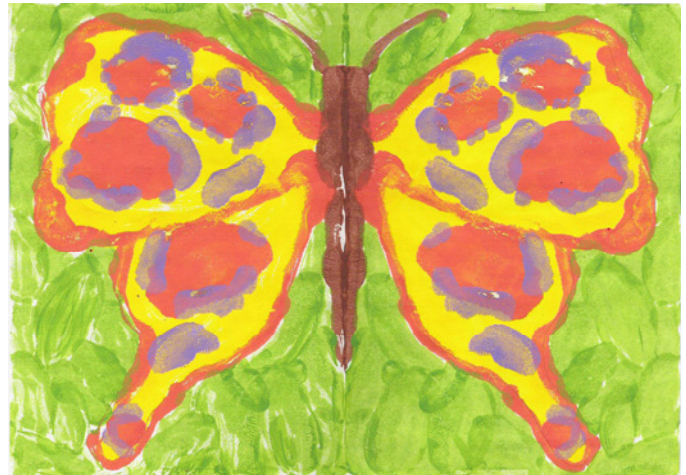
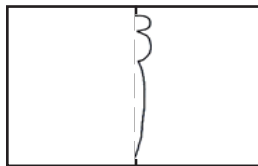
- sculpture
- industrious
- 2-D/3-D
- overlapping
- labor
- ingenious
- asymmetry
- camouflage
- symmetry/ symmetrical/ asymmetrical

### MOTIVATION & FOCUS

- Present and discuss the art history image(s) recommended in the Weekly Theme. Discuss the colors, shapes, and patterns and how they could be drawn.
- Present Weekly Theme information.
- Discuss the Christian symbolism of the butterfly - the lowly earth life, the death and burial of Christ, and the Resurrection of Christ to eternal life. The earth-bound caterpillar "dies", is "buried" in its cocoon, and is transformed into a new creature that is not earth-bound.
- Play the sound recording.
- Tell students that they will be creating an "ink blot" butterfly.

### ACTIVITY

- Students fold 12"x18" paper in half, making a good crease; open and press flat.
- **Using light pencil pressure** beginning at the fold line, draw 1/2 of a cigar shape 5" long on one side of the fold only (the other half of the body will be on the other half of the fold). Make indentations in the line for the head, thorax, and abdomen.
- Draw the lower wings attached to the thorax positioned about 1" from the bottom of the thorax.



### MATERIALS

- pencils
- watercolor or tempera cakes
- 11"x15" approx. watercolor paper
- painting set-up (see Introduction 19-23)
- images listed in this week's theme
- erasers

- Draw the upper wings attached to the thorax positioned about 1" from the top of the thorax.
- Draw one antenna from the top of the body.
- Cover tables; distribute all painting supplies.
- Beginning with brown, and using a #10 student watercolor brush, paint each section of the body separately, folding the paper over immediately after each section and pressing, rubbing the entire painted area; open. Paint the antenna, fold over and press; open.
- Limit the paint for the wings to three colors. Do not use black or dark blue.
- Paint the wings with any color except green or black. Paint only a few strokes at a time. Fold the paper over immediately and press; open. Repeat the process on all design lines of the butterfly, just a few lines at a time, using other colors, folding the paper, pressing, and opening. In this way the paint does not dry before it can be blotted to the other half. Do not worry about paint spreading out beyond the edges of the drawing; do not "fill in" with the brush if some of the mirror image is missing.
- Paint the background in the same manner, keeping in mind that butterflies would be near leaves and flowers.
- When all areas have been painted, blotted, and dried, press open and flatten carefully.
- Set aside to dry. Flatten with heavy books after drying if necessary.
- The indistinct quality is usually desirable.

**Remember to use one of the evaluation tools.**