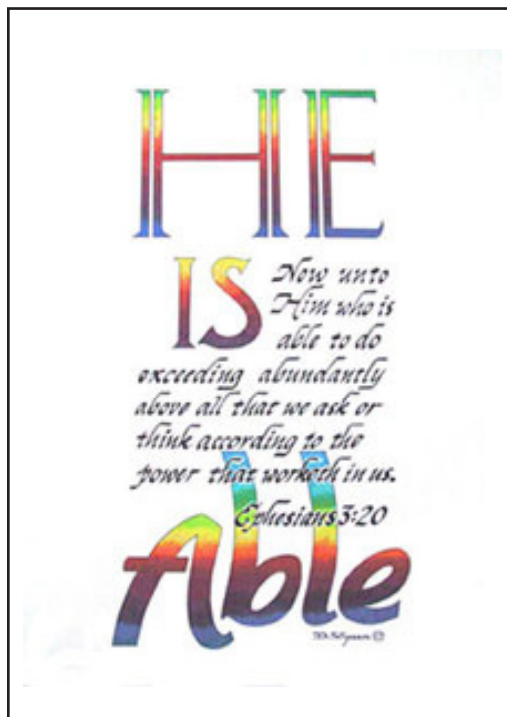


SAMPLE PAGES FROM

Beginning Calligraphy[©]



a
workbook

for
grade 5
through
adult

Diane Shields Spears
Doctor of Christian Education, Artist
www.spearsartstudio.com



Table of Contents

	<i>Page</i>
<i>Title</i>	<i>2</i>
<i>Mission & Copyright</i>	<i>3</i>
<i>Table of Contents</i>	<i>4</i>
<i>Frequently Asked Questions</i>	<i>5</i>
<i>Introduction and recommendations and The Method</i>	<i>6</i>
<i>Reproducible grid with lettering guides</i>	<i>7</i>
<i>Reproducible grid, blank</i>	<i>8</i>
<i>Thick and Thin</i>	<i>9</i>
<i>Spacing</i>	<i>10</i>
<i>Upper case instruction and reproducible tracing pages</i>	<i>11-31</i>
<i>Lower case instruction and reproducible tracing pages</i>	<i>32-53</i>
<i>Numerals instruction and reproducible tracing pages</i>	<i>54-57</i>
<i>Passages instruction and reproducible tracing pages</i>	<i>58-61</i>
<i>About the artist/educator</i>	<i>62</i>

*Spears Art Studio
Beginning Calligraphy Workbook,
Grade 5 through Adult ©*

Introduction & Recommendations

There are countless styles of manuscript (hand-written) forms. The style of calligraphy taught in this book is a variation with flourishes of a common italic cursive/printed letter formation. There are even some variations within this style. When this style is learned, other styles are easier to learn. Even combinations of styles can be beautiful. The materials for this booklet are easily obtained and copies can be made of all pages. Please honor the Limited Copyright notice on page two of this manual.

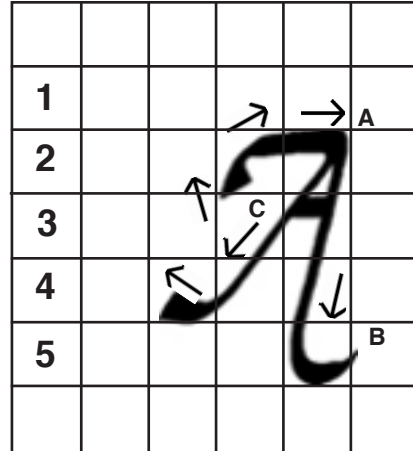
The recommended marker-pen is a black ink calligraphy marker, broad size tip (see page 9 for an image of one recommended marker-pen). The broad size marker fits the 1/4" grid format in this workbook. There are other brands of pens available with some slight differences in the sizing, but most will fit. Plan on purchasing at least two markers to begin. Do not purchase calligraphy fountain pens for use in this workbook, as the sizes are not compatible with the practice pages; they are much more difficult to use, and are, therefore, not recommended for beginning students.

The Method

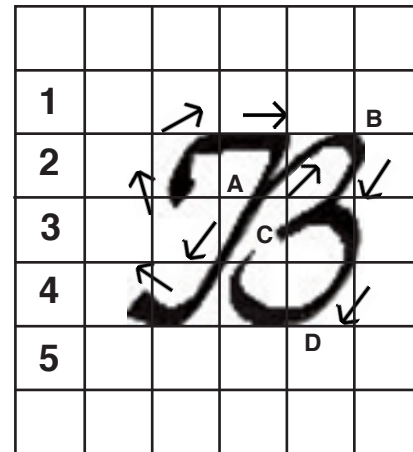
- 1. The key is practice, practice, practice.*
- 2. You may photocopy the 1/4" graphs in this booklet (pages 6 and 7) for lettering and passages practice. Photocopying page 7 for the included lettering guide is highly recommended until it is memorized or becomes "second nature." OR:*
- 3. Inexpensive 1/4" graph paper can be substituted for the practice graphs found on pages 7 and 8. Number your graph and blank practice papers exactly as shown on page 8. Before attempting letter formation in earnest, practice several times on photo copies of page 7, the thick and thin and letter spacing guide on pages 7, 9 and 10.*

Upper Case Letter Formation, continued

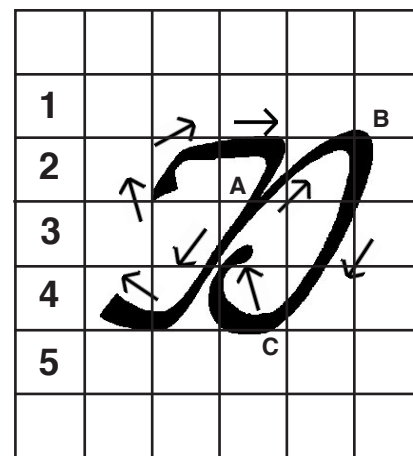
A Begin with the left side stroke as in the previous practice. To finish the letter, begin at the point marked **A** and draw down at a slight left angle to the bottom of row 5, then to the right with a slight "whip" at the end **B**. This last little stroke is called a serif. Draw the short cross bar touching the top of row 3 **C**. The tail can dip below row 5 (see the letter *H* formation, page 14).



B Begin with the left side stroke. Continue from the point marked **A** and draw up and to the right to the top of row 2 **B**. Curve down to the middle of row 3 **C**. Curve up and around down to the bottom of row 4 **D**. Curve back up to the right and end almost at **C**.



D Begin with the left side stroke. Continue from the point marked **A** and draw up and to the right to the top of row 2 **B**. Draw a slight curve down and to the left. Curve under when it touches the bottom of row 4 **C**. Curve back up to the right and end slightly above the bottom of row 3 **D**.

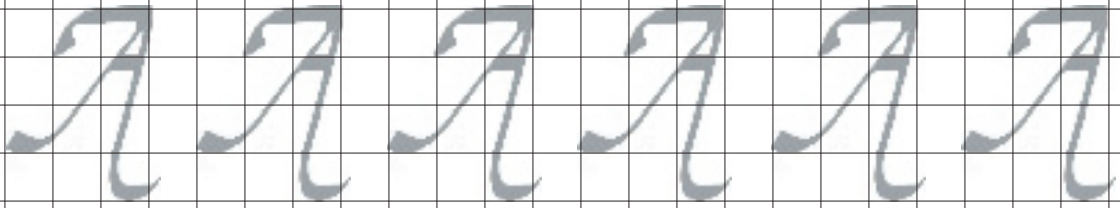


Left side-stroke directions will not be repeated from this point.

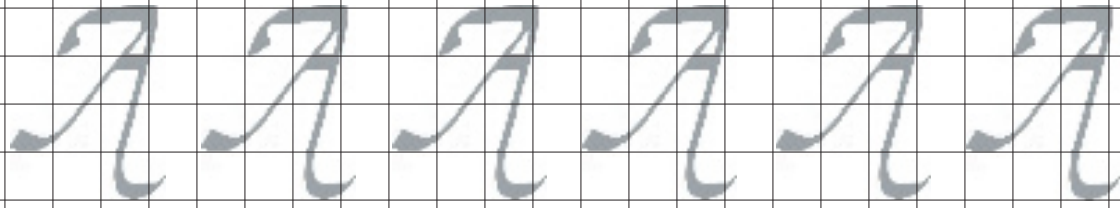
- Remember the 45° pen angle.
- Study the angles, directions of the arrows, the rows, and the spaces occupied by each letter. Trace them on the following page and practice on several blank pages free-hand before going ahead to new information.

PRACTICE WORKSHEET
REMEMBER THE 45° PEN ANGLE

1
2
3
4
5



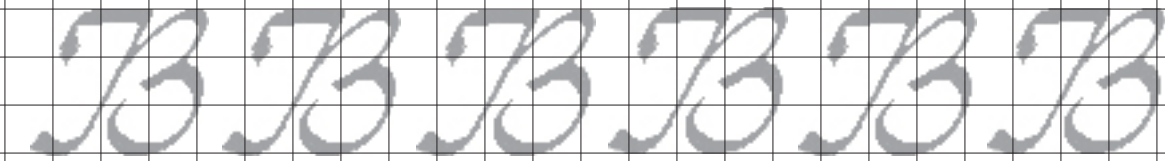
1
2
3
4
5



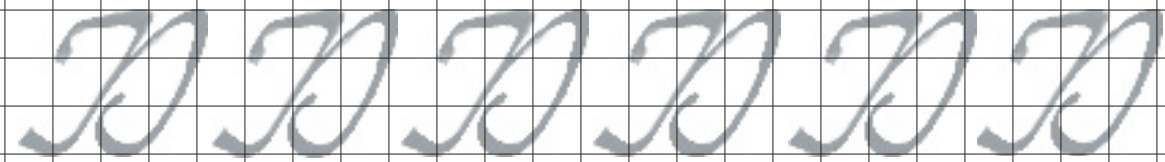
1
2
3
4
5



1
2
3
4
5



1
2
3
4
5



1
2
3
4
5



Writing Passages

Now, you should be ready for passages if you have practiced diligently as directed.

The following pages contain passages that you may trace. After you trace each one, be sure to practice these also free-hand on blank grids. You probably noticed that in your practice there were days when you formed more rounded letters, and other days when you formed more pointed letters. You may always experience this variation, just like you do in your "regular" cursive writing. Therefore, when you write a passage, try to finish it on the same day.

Calligraphy is most attractive when the letters are close together and the words have just enough space between them to discern the message. What you are writing is just as important as the beauty of the writing. Passages should be written like cursive writing; i.e. with upper case letters for the beginnings of sentences and for proper nouns. (In fact, this type of italic is also called italic cursive for that reason and because many letters are formed in one stroke like cursive.) A passage with all upper case letters is difficult to read, and would not be appropriate in regular cursive writing either. When you become proficient in this type of letter formation, you may begin to adapt the shape of any letter. Many calligraphers adapt their initials for special effects.

When you complete all the recommended practice in this workbook, practice other passages of your choice. You will then be ready to explore other styles of calligraphy. I hope you have had fun!

